

HeBoCoat® PL-W 250

Power Line - Water + BN-10

HeBoCoat® PL-W 250 is a highly concentrated, water based Boron Nitride coating for aluminium casting processes.

- Advantages**
 - ▶ Excellent surface protection
 - ▶ Excellent lubricant and release agent
 - ▶ Reduces wear on refractory materials
 - ▶ Improves lifetime of refractory parts and tools
 - ▶ Easy to process
 - ▶ Economic in use

- Properties**
 - ▶ Prevents adhesion of molten aluminium to refractory parts and tools
 - ▶ Refractory binder provides good surface adhesion of the coating
 - ▶ Low abrasion
 - ▶ Temperature resistant, up to 900°C in air

- Typical Areas of Application**
 - ▶ Coating of launders, runners, tundishes, skim frames, hot top rings and tools in continuous casting applications
 - ▶ Coating of ladles and refractory parts in low and pressure die casting applications

- Recommendations for Processing**
 - ▶ Applied by painting and spraying
 - ▶ Stir the concentrated coating prior to use. Depending on the application dilute with water
 - ▶ For spray application we recommend a dilution ratio of 1 : 2, 1 part **HeBoCoat® PL-W 250** : 2 parts of water
 - ▶ If required further dilution is possible
 - ▶ Apply on clean, dust and oil free surfaces
 - ▶ Apply in thin and covering layers to ensure good surface adhesion
 - ▶ Spraying onto warm surfaces (150-200°C) improves the spray result and shortens the drying time
 - ▶ Re-coat as and when required
 - ▶ Ensure coating **HeBoCoat® PL-W 250** has fully dried before it gets in contact with the melt
 - ▶ Brushes and tools can be cleaned with water
 - ▶ For further details please refer to page 2

- Technical Data**
 - ▶ Colour: Grey
 - ▶ Solids content: 37 %
 - ▶ Boron Nitride: 25 % *
 - ▶ Binder: Aluminium Oxide
 - ▶ Density: 1.29 g/cm³
 - ▶ pH-value: 3 - 4
 - ▶ Coverage: 15 -25 m²/kg with a dilution rate of 1 : 2

- Packing Units**
 - ▶ 1 kg and 10 kg in PE-bucket

- Storage and Safety**

Store in dry conditions and protect from frost. Minimum shelf life 12 months if stored in original packaging and under appropriate conditions. For further information please refer to the current safety data sheet.



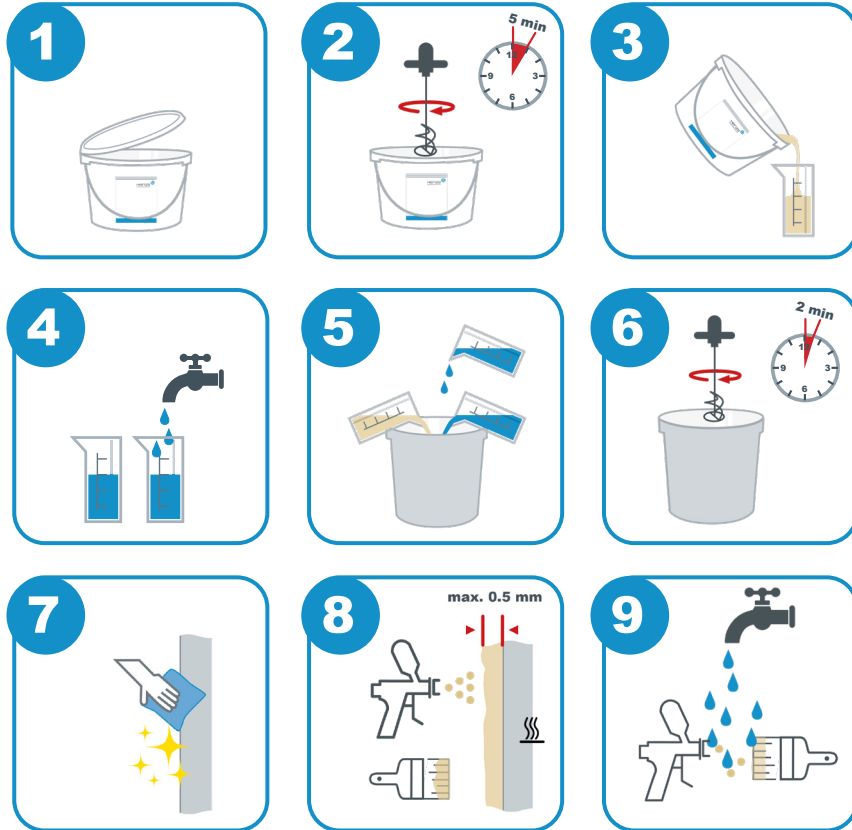
* The product contains boron nitride as well as other ceramic components.

The data quoted in this leaflet are typical for the material. They are intended as a guide only and should not be used in preparing detailed specifications. Actual product data may deviate from the figures given. We reserve the right to alter product data within the scope of technical progress and new developments. Since processing involves factors that are beyond our control, recommendations made in this leaflet should be checked by preliminary trials, especially for third party applications. These recommendations do not absolve the user from the obligation of investigating the possibility of infringement of third parties' rights and, if necessary, from clarifying the situation.

HeBoCoat® PL-W 250

Power Line - Water + BN-10

INSTRUCTION



The data quoted in this leaflet are typical for the material. They are intended as a guide only and should not be used in preparing detailed specifications. Actual product data may deviate from the figures given. We reserve the right to alter product data within the scope of technical progress and new developments. Since processing involves factors that are beyond our control, recommendations made in this leaflet should be checked by preliminary trials, especially for third party applications. These recommendations do not absolve the user from the obligation of investigating the possibility of infringement of third parties' rights and, if necessary, from clarifying the situation.